

PATEL'S EMERALD

www.patelrplrealty.com

 **PATEL RPL**
REALTY



PATEL'S EMERALD

Patel's Emerald

Plot No.229 Shivganga Nagar,
Opposite Survodaya Ground,
Ambarnath - East

Contact Details

+91 9665 393 600
+91 7410 090 801

About Patel RPL Realty

Patel RPL Realty is a well-established name in business and social circles since 1988. Initially, they began their projects near the Central suburbs beyond Thane where they started working as a retailer operating in the retail space of more than **30,000 sq. ft.** Today they proudly serve lacs of customers for various housing requirements.

Our home is a place where we can truly live & be ourselves, this is why we craft the spaces you'll truly cherish forever. With commercial and residential spaces spanning over more than **6,67,000 sq. ft.** our spaces are designed for higher living. Under the guidance of Mr Bechar Raghoji Patel, a visionary & the founder of Patel RPL, we have proudly made more than **3,000+** families happy and more are being served with care & smiles!



Construction

PATEL RPL REALTY



Supermarkets

PATEL'S R MART



Garment Outlets

PATEL'S R CHOICE



Export

PATEL RETAIL PVT. LTD. EXPORT

PATEL'S EMERALD

Conceived with elegance Perfected to brilliance

It takes something extra special and grandeur to impress the best.

Patel's Emerald offers luxurious and spacious residences for the ones who are used to reaching new heights and go the extra mile. A space that's built for the ones that are used to perfection.

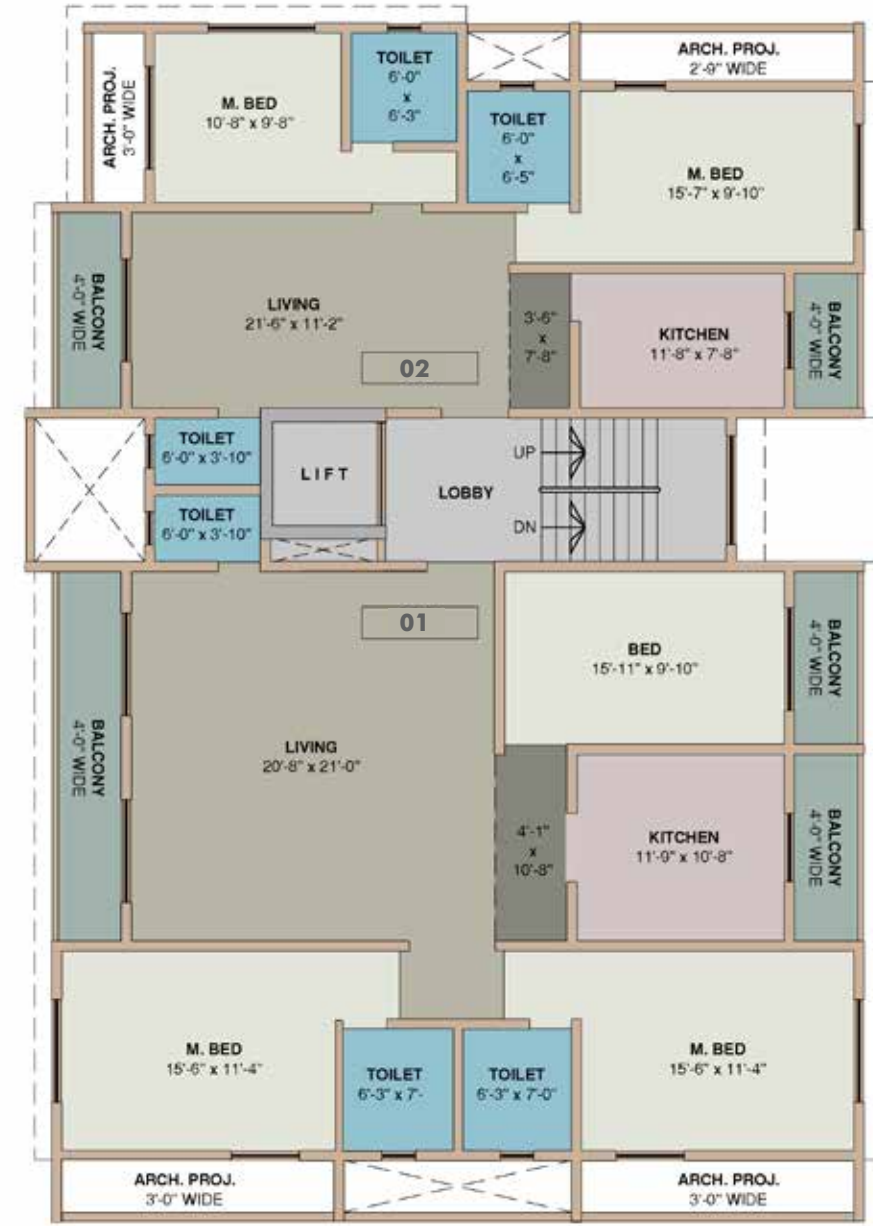
Here's a home that invites you to experience every side of luxury. For a lifestyle that's class apart, we have built a tower so iconic and a home that is embedded with opulence and splendour!



Floor Plan



1st & 2nd Typical Floor Plan



3rd to 6th Typical Floor Plan

Spacious & luxurious homes at their best



We have redefined your idea of space



Amenities

Living at Patel's Emerald allows you to encounter a lifestyle that is ingrained with luxury and convenience.

From a designer lobby entrance for a royal welcome to the best high-speed elevators to lavish and spacious areas, we don't just offer you a home, we bring you a whole new way of living.

List of amenities & their brands

Vitrified Flooring In Entire Flat
Kajaria | Quotone | Vermora

Well-Designed Bathroom With Deluxe Bathroom Fitting
Plumber | Jaquar

TV/ Telephone Point In Living Room & Bedroom
Legrand | GM

Power Back Up For Common Areas And Elevators
Invertor Backup

Anti-Skid Flooring In Washrooms
Kajaria | Quotone | Vermora

Granite Kitchen Platform With Stainless Steel Sink And Service Platform
Z Black Granite Nirali Sink



List of amenities & their brands

Modular Electrical Switches
Legrand | GM

Tiles Dado Up To Beam Bottom For WC & Bath
Kajaria | Quotone | Vermora

Elevators Of High Speed And Reputed Make
Schindler | Omega

Branded Concealed Copper Wiring With MCB
Polycab | RR, Siemens | L & T

Designer Entrance Lobby
Kajaria | Quotone | Vermora

CCTV Security For Common Areas And Elevators
CP Plus | Dahua | Hikvision

Exhaust Fan & Geyser
Power Point In Bathroom

Waterproofing Of Brick Bat Type On Terrace
Brick Bat

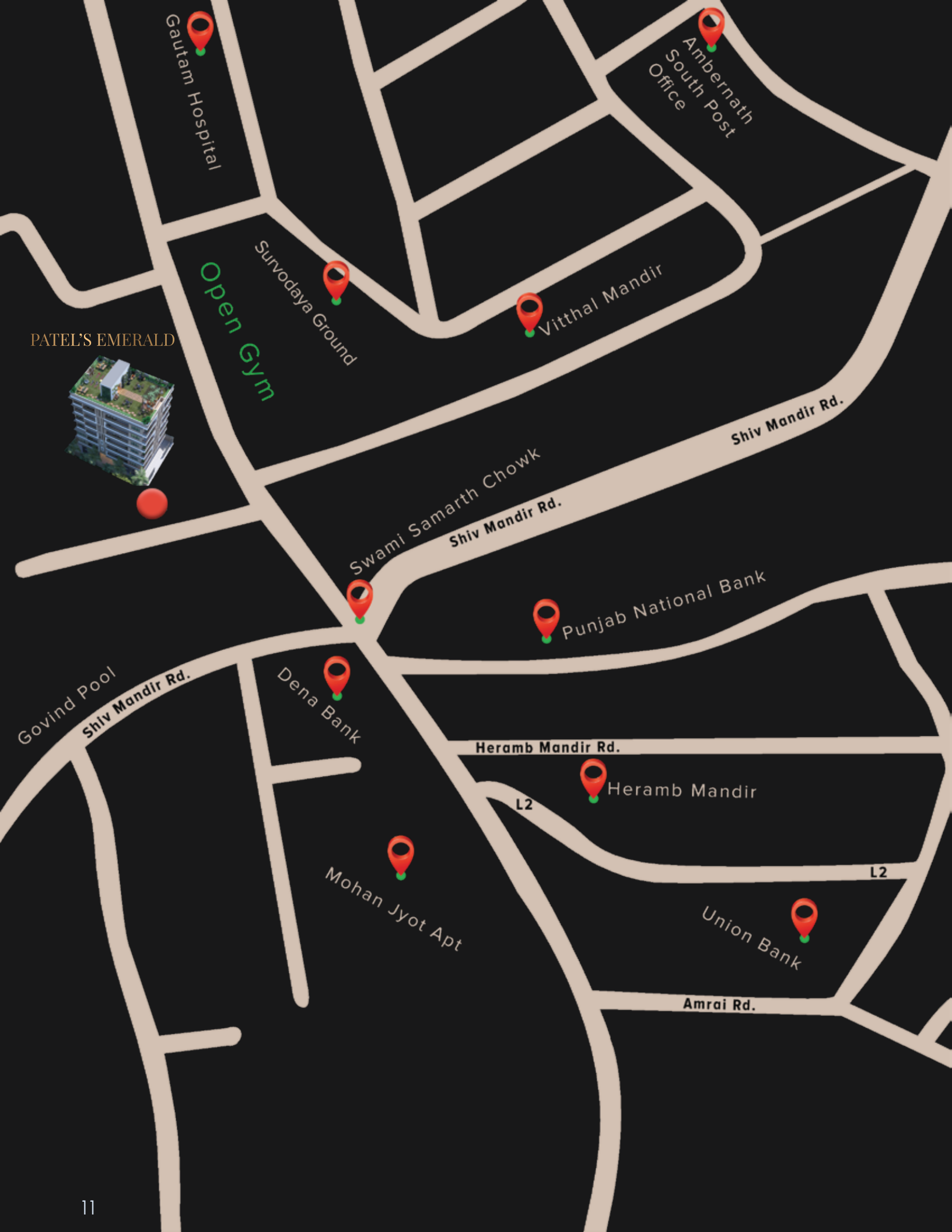
Concealed Plumbing & Branded C.P Fitting And Sanitary Ware
Astral | Prince, Parryware | Jaquar

Anodised Coated Heavy Aluminium Sliding Windows With Granite Sill
Jindal | Z Black Granite

Designer Quality Tiles Above Kitchen Platform Up To Door Level
Kajaria | Quotone | Vermora

Velvet Wall Paint In Entire Flat & Rough Tex with ultima protect paint
On External Walls
Asian Paint

Wooden Doors With Laminate On Both Side In Every Room With
Elegant Handles & Locks
Ply FRAME With Doors



LOCATION

Because your luxury home isn't complete without the right setting!

Patel's Emerald residence is placed at one of the most prime locations of Ambernath. With accessibility & convenience, we bring the world right to your feet. With gyms, hospitals, banks, restaurants & parks just a breath away you gain seamless access to everything you could wish for. It's a location designed for you and your family to truly thrive.

The project is registered under MAHA RERA with its registration number P51700028239 and all the details are available on the portal website : <https://maharera.mahaonline.gov.in>